

TUFF-VENT

Steel security louvred doors



**STEEL DOORS
FOR THE
REAL WORLD**



INTRUDER RESISTANT

Certified to **PAS 24**
and approved by
Secured by Design



CE MARKED

CE Marked to
BS EN 14351-1



MADE TO MEASURE

All steel doors are made to order at our UK factory and delivered fully assembled.

ROBUST

Steel Door Solutions

Scandinavian design. Manufactured in Britain



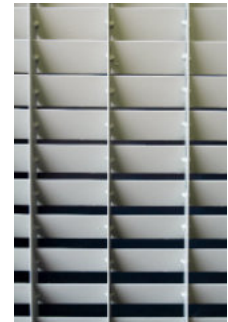
TUFF-VENT

Steel security louvred doors

Alongside our standard steel and aluminium louvred products, we also manufacture a security rated louvred door. Offering maximum free airflow whilst maintaining strength and security, TUFF-VENT is suitable for plant rooms, boiler rooms etc where a continuous airflow is required to ventilate machinery. TUFF-VENT is fully CE compliant and can be polyester powder coated in our standard range of colours.

> DOOR LEAF

Production sizes:	TUFF-VENT is available made to measure and delivered fully assembled.
Thickness:	A standard 2mm steel louvre vane is used throughout, welded at every junction.
Material:	2mm galvanised steel sections as standard.
Construction:	Constructed using hollow metal standardised sections.



> DOOR FRAME

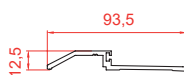
Construction:	Fully welded construction with 10no. adjustable fixing feet per jamb, variable sub-frame supplied as standard to accommodate site tolerance of -0/+30mm. The frame is fitted with 5no. surface mounted hinges.
Opening:	Single swing latched as standard.

> SIZES

Configuration:	Max frame width (mm):	Max frame height (mm):
Single leaf without side & over panels:	1085	2180
Double leaf without side & over panels:	2180	2180
Coupled or stand alone side panels(either side):	700	2195
Coupled or stand alone over panels:	2500	600

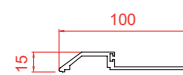
> THRESHOLD

Standard



15mm aluminium
(DDA compliant)

Optional



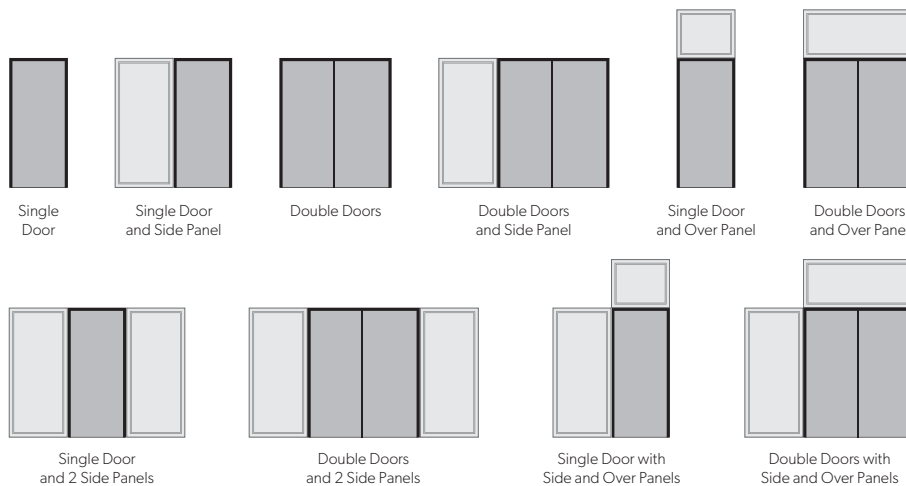
15mm steel pressed rebated threshold
(DDA compliant)

> FREE AREA

When calculated on a 1000mm x 2100mm over frame door, TUFF-VENT achieves a free area of 55 %. When based on the area of the louvres only, this equates to 72%.

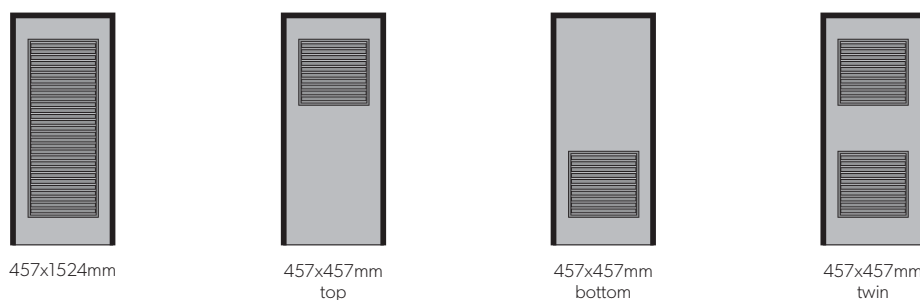
> PANEL ARRANGEMENTS

Panels:	Side and over panels can be supplied.
Panel sizes:	Side panels are available up to 1100mm wide x 2500mm high. Over panels are available up to 2500mm (single door) or 2200mm (double door).
Options:	Combinations to create enclosures. Please consult the Sales office with specific requirements.



> LOUVRE PANEL OPTIONS

Options:	TUFF-VENT grid is also available as a panel to fit into INNA-DOR, OUTA-DOR and SECUR-DOR 2.
Sizes:	Two standard sizes: 457mm x 457mm and 457mm x 1524mm, giving approximately 0.15m ² and 0.5m ² free area respectively.



> SECURITY

The TUFF-VENT doorset is tested to PAS 24 and approved by Secured by Design - the official UK Police initiative to 'design out crime'. Please note however that TUFF-VENT is not available certified to LPS 1175 like TUFF-DOR.




> **FINISHES**

Standard




Polyester Powder Coated from Standard Colour Range


Optional



Polyester Powder Coated from Non-Standard Colour Range



Stainless Steel Brushed, Polished or Patterned



Unfinished for site finishing

> **LOCKS AND HARDWARE**

We stock a wide range of steel door parts, including: handles, locks, hinges, seals, panic hardware, closers & stays, cylinders, paint, thresholds, access control hardware and plates.

TUFF-VENT is fitted with a Hooply lock, with Securefast escutcheons and TS007 cylinder as standard. Double door configurations are available with flushbolts. All doors are delivered fully assembled.



ROBUST UK LTD Coaldale Road, Lymedale Business Park, Newcastle-under-Lyme, Staffordshire, ST5 9QX. Tel: +44 (0) 1782 592900 Email: sales@robust-uk.com

Individual specifications may vary as Robust conduct a policy of continuous product development.