

# INSTALLATION INSTRUCTIONS

## A FRAMES

### 1: CHECK DELIVERY

#### Check contents of the shipment

- A. Door leaf & frame + 2 mounting extensions.
- B. Installation kit, 1 no. per door set.
- C. For frame type A, there will also be the wall cover profile (sides and 1 top piece).

### 2: CHECK FIXINGS

#### Contents of kitbag

- A. 16 no. 7.5 x 82mm Torx Head screws, suitable for masonry, steel or timber structures (see fixing pack for drilling sizes).  
18 no. screw for fire rated doors.  
20 no. screws for double doors.
- B. 16 no. plastic caps, clear 20mm diameter for screw holes in frame.  
18 no. plastic caps for fire rated doors.  
20 no. caps for double doors.
- C. 1 no. Torx Head driver bit.
- D. 1 no. installation instructions sheet.
- E. Drill bits.
- F. Allen keys.

### 3: CHECK TOOLS

#### Necessary for installation

- A. Spirit level.
- B. Screw bit driver (for Torx Head bit).
- C. 110v drill.
- D. 12mm Allen key.
- E. Sealant & application gun to bed threshold.

#### IF FIRE RATED

Then fire rated sealant is also required.

It must have independent fire test evidence suitable for sealing thin gauge steel (1.5mm) to wall type, and it must be fire rated for equal to, or more than, the door.

See overleaf for further sealant information.

### 4: CHECK OPENING

#### Check the structural opening size

1. If the door is a modular size, eg 900 x 2100mm, the structural opening width should be 900mm (tolerance of +15/-5mm), and the structural opening height should be 2100mm (tolerance +/-5mm).
2. If the structural opening size is larger than the indicated maximum width or height, the wall must be built up with the same material as the existing wall to preserve its fire rating (where applicable).

### 5: SEPARATE DOOR/FRAME

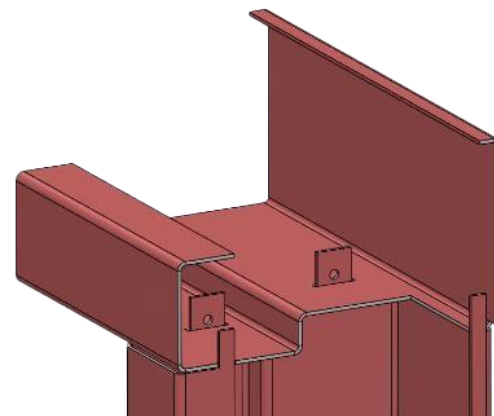
- Separate the door leaf from the frame.
- On double doors, unless specifically requested, the frame will be supplied ready for site assembly (see below).

### 6: DOUBLE DOORS

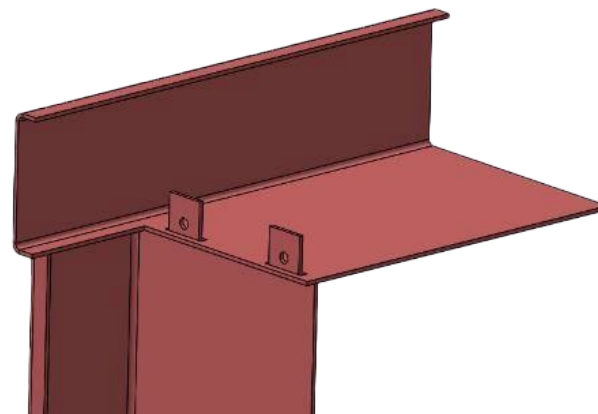
For ease and safety in transit, the double door frame will have been supplied in 7 sections. You should have:

- A. 2 x hinge jambs (1 LH and 1 RH).
- B. 2 x hinge trims (1 LH and 1 RH).
- C. 1 x header section.
- D. 1 x header trim.
- E. 1 x threshold.

1. Fit the header section over the tabs on the hinge jamb, and fix in place using self-tapping screws.
2. Using a hammer and flat head screwdriver, bend over the tabs so they sit against the header section.
3. Repeat for the opposite hinge jamb.
4. Standard thresholds should be fitted into the bottom of the hinge jambs at this point, with rivets supplied.



5. Connect LH hinge trim to header trim using the tab and screw method.
6. Repeat for the RH trim.

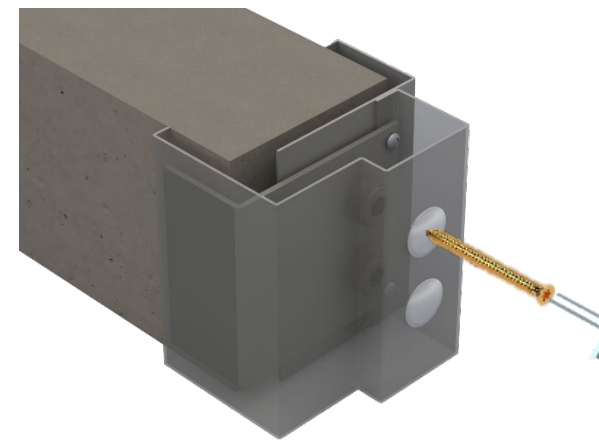


You are now ready to fit the frame into the opening.

### 7: MOUNT THE FRAME

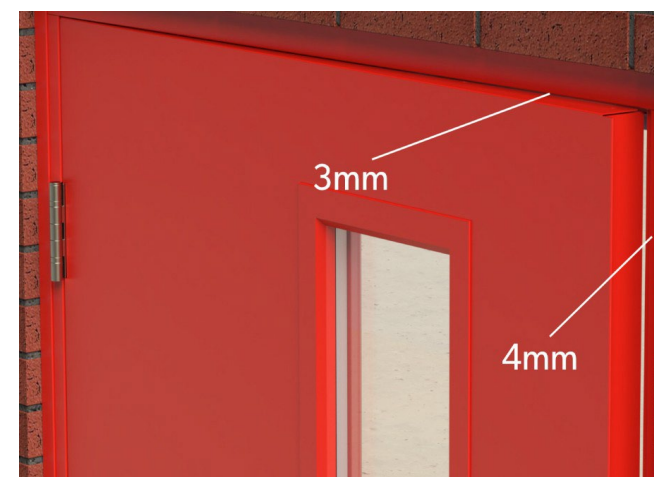
1. Lift the frame assembly into the opening, placing centrally.
2. Using the 12mm Allen key, wind out one of the pair of fixing feet at the top and bottom corners – this will secure your frame to the structure.
3. Slide the trim assembly between the structure and frame assembly on the internal side.
4. Using the remaining fixing of the pair, secure the trim to the main frame by winding the jack screw back towards the frame.
5. The middle two feet can now be wound out. These can be adjusted once the door is hung.

### 8: FRAME FIXING



### 9: HANG THE DOOR LEAF

1. Hang the door leaf into the frame.
2. Check the function of the door, and the gaps between the door leaf and frame. These should be 4mm at the side, and 3mm at the top.



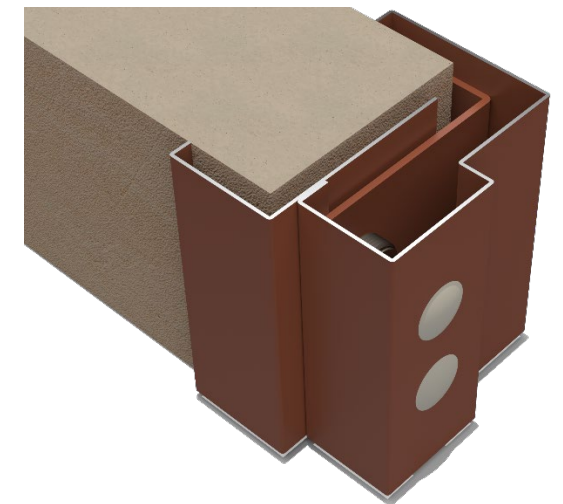
3. All screws must rest on the pins of the hinges.

### 10: CHECK DOOR GAPS

The gaps on a double door between the leaves at the centre point can be made wider or narrower by adjusting the frame. Please see diagrams and instructions overleaf for clarification.

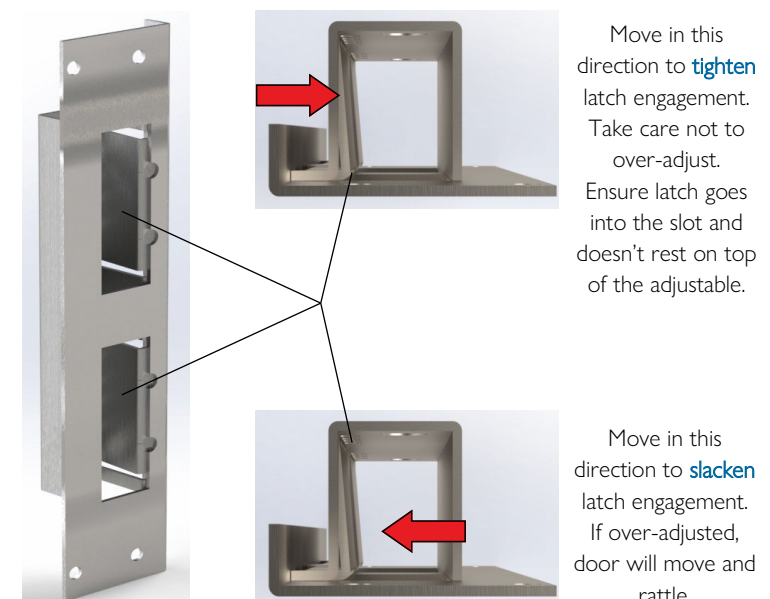
### 11: FIT CAPS

Fit the plastic cover caps to cover up the holes for the mounting bolts.



### 12: ADJUST KEEP

Adjust by bending forwards or backwards to allow door to latch/lock correctly.



# INSTALLATION INSTRUCTIONS

## A FRAMES

### DOOR GAPS

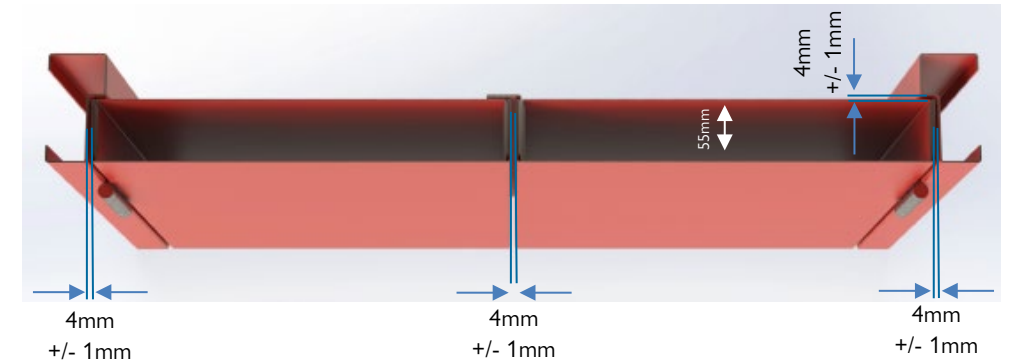
#### TOP & BOTTOM OF DOOR



#### SINGLE DOOR

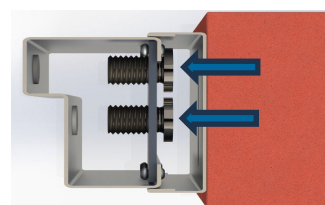


#### DOUBLE DOOR

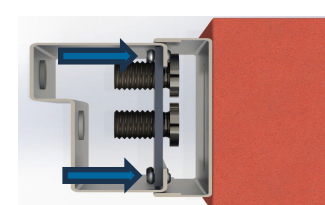


### ADJUSTING DOUBLE DOOR GAPS

#### WIDER CENTRE GAP



The 4 screw jacks on each frame leg need winding back into the frame to open a gap up between the structure and the frame.

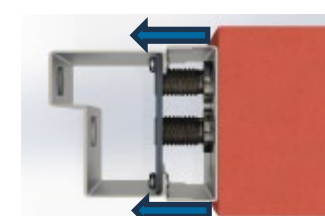


The frame fixing screws need to be driven into the structure, thus adjusting the frame outwards towards the structure.

#### NARROWER CENTRE GAP



4 screw jacks on each frame leg need winding out on to the structure.



Continuing to wind the screw jacks out will adjust the frame away from the structure and push the door blades together.

### SEALANT INFORMATION

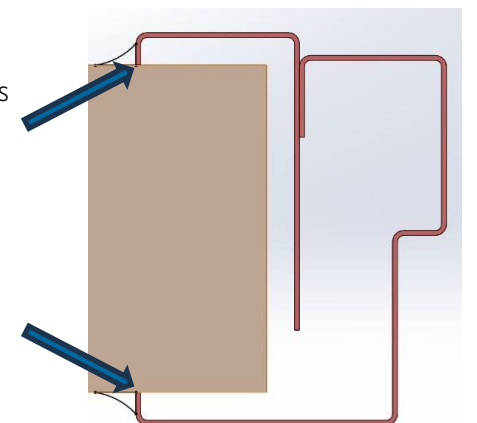
Please note: sealant is NOT required for fire stopping.

If sealant is preferred, below is a list of pre-approved products:

- Everbuild Firemate.
- Hilti CP606.
- Rockwool Firepro.
- Quelfire Intumescent Sealant.

#### SEALANT INSTALLATION

1. Ensure surfaces are clean and dry.
2. Sealant can **only** be used in the locations indicated here:
3. Maximum bead depth is 15mm x 15mm.
4. Sealant should only be applied in ambient temperatures of 5°C to 40°C.
5. Curing time will take between 15-60 minutes, depending on humidity.



Frame shown for door gap details is C type.