

# ROBUST

## STEEL DOOR SOLUTIONS



FIRE RATED  
UP TO 4 HOURS



1.3W/(m²K)  
ACHIEVABLE



UP TO 10 YEARS  
WARRANTY



PROTECTING  
PEOPLE & PROPERTY

# ROBUST

# ROBUST BY NAME.

# ROBUST BY NATURE.

Robust UK are the leading manufacturer of steel door solutions, offering a wide range of products for use in the Industrial and Commercial sectors.

Whether it's a new build or refurbishment project, our doors provide a "Robust" solution for projects within the Transport, Education, Health, Housing, Industrial, Warehousing and Utilities markets.

With fire, security, glazed and vented doors available, all made-to-order to a variety of specifications and certifications, you can be sure of a premium, high quality solution whatever your requirements.





# PROTECTING PEOPLE & PROPERTY

## WHO WE ARE

Our customers are at the heart of everything we do, and what our business is built upon. We have over 25 years experience in the trade, manufacturing a broad range of quality products which are fully third-party tested and certified for your peace of mind.

The only **"Trade Only"** company you can trust, we provide dedicated Sales Estimators and Account Managers for your account, ensuring strong relationships and consistency of service.

We're proud of the friendly, helpful and knowledgeable team that's at the heart of Robust. Our fantastic colleagues have a collective wealth of experience; whether that's from years of service within Robust; the wider industry; GAI qualifications; or broader manufacturing backgrounds.



## WHAT WE DO

We invest heavily in research and development to continuously improve our products and ensure our customers have access to the latest innovations. In addition, we've invested over £6m in machinery and our new manufacturing facility in Newcastle-under-Lyme to increase capacity, reduce lead times and provide smoother fabrication and precision – all for the benefit of our customers.

Our broad range of high quality products & solutions are all custom-built to order, supported with long product warranties and transparent third-party test evidence.

We believe in building strong, collaborative relationships with customers & suppliers, with a readiness to help with any specification – so get in touch to discuss your requirements!



# INVESTING IN TESTING

## THE GOLD STANDARD

Whether it's security rating, fire resistance, thermal transference or acoustic ratings, all our products are third-party tested to give you peace-of-mind that they perform how we say they do.

We make continual improvements to our product range in line with changing regulatory demands – for example, CE Marking. In addition, our research and development team regularly send doors for testing with independent bodies to gain certification. These include Secured by Design (the official police initiative to 'design out crime'), the Loss Prevention Certification Board (LPCB) and Warrington Fire.

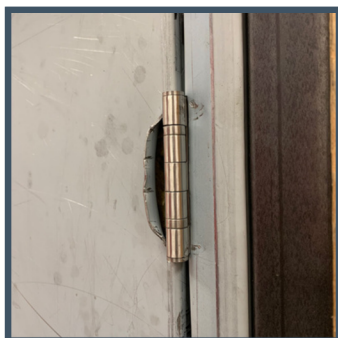


## FIRE RESISTANCE

We offer a broad range of certified fire resistant doors including our highly versatile **INNA-DOR** and **OUTA-DOR** products, which both offer up to 4 hours fire resistance if needed.

Our security rated doors **TUFF-DOR 2.1** and **SECUR-DOR 2.1** are both available with 60 minutes fire rating on request in addition to their security rating (certain specifications only).

**GLAS-DOR** combines fire protection with other requirements such as acoustic reduction, ballistic resistance and security certification, and we can also provide **OUTA-DOR Premio** and Novofire® from Novoferm for even more choice and flexibility.



## INTRUDER & BLAST RESISTANT DOORS

We offer a broad range of security rated steel door solutions – these include the **SECUR-DOR** range (available with PAS 24, STS202 BR3 and ENV 1627 Level 4 certifications as required), and **TUFF-DOR** collection (LPS 1175 certified to SR2, SR3 or SR4 levels).

Certified to PAS 24 and approved by Secured by Design, **TUFF-VENT** offers maximum free airflow whilst maintaining strength and security, and **GLAS-DOR** provides a fire rated fully glazed solution that's also burglary-resistant (PAS 24 and RC3 and RC4 classes in accordance with standard ENV 1627).





# ACCREDITATIONS & MEMBERSHIPS

Our commitment to exemplary standards, consistent quality, and continuous improvement is demonstrated by the various certifications and accreditations we hold, along with membership of several well-respected organisations.

This means that our manufacturing process is regularly audited, ensuring we comply with safety, quality and performance standards every time a door is made.

## ISO 9001 QUALITY MANAGEMENT



Assessed to ISO 9001:2015  
Cert/LPCB ref 1070

ISO 9001:2015 is a globally recognised standard for quality management. It demonstrates that we meet the needs and expectations of customers and other stakeholders, while also meeting statutory and regulatory requirements.

The core elements are:

- 1 Customer Focus
- 2 Leadership
- 3 Engagement of People
- 4 Process Approach
- 5 Improvement
- 6 Evidence-Based Decision Making
- 7 Relationship Management

## GUILD OF ARCHITECTURAL IRONMONGERY



As a Corporate Member of the GAI we're committed to the highest standards of technical excellence and professionalism, working with the organisation to promote these standards to the wider construction industry and its clients.

We actively ensure that we maintain the highest level of skill and knowledge regarding products, legislation and industry standards amongst individuals and as a collective.

Our membership demonstrates that we follow the GAI's Code of Professional Conduct, and that we have at least one person within the organisation holding the GAI Diploma qualification. In fact, we have a number of DipGAI qualified colleagues!

In addition to our membership, as proud supporters of the GAI and the education and support it provides, we were absolutely thrilled to sponsor the 44th Annual GAI Education Awards in 2024, as well as regularly hosting the GAI Midlands Community Hub.



# ACCREDITATIONS & MEMBERSHIPS

## MASTER LOCKSMITHS ASSOCIATION

The MLA is recognised as the authoritative body for locksmithing by a number of organisations including the Home Office, British Standards Institute (BSI), Secured by Design and more. The MLA ensures it's members have undergone rigorous vetting, are qualified professionals, and are regularly inspected.

We're Affiliate Members in order to support the Aims and Objectives of the Association, which include ensuring high standards of conduct, practice and materials; providing training & information; being the leading trade association for the locksmithing industry; and providing peace of mind to the end customer in the absence of a Government based licensing scheme.



## SECURED BY DESIGN



Secured by Design (SBD) is the official police security initiative to "design out crime". It works to improve the security of buildings and their immediate surroundings to provide safe places to live, work, shop and visit.

SBD's product based accreditation scheme – the Police Preferred Specification - provides a recognised standard for all security products that can deter and reduce crime, ensuring consistent standards are met across all attack resistant crime prevention products.

Robust are proud to offer a choice of SBD accredited products, including **TUFF-DOR 2.1** which is LPS 1175 (SR2 Issue 8) certified, and **SECUR-DOR 2.1**; tested to STS201 and PAS 24 (2022).

**TUFF-VENT** - our fully louvred security doorset - offers maximum free airflow whilst maintaining strength and security. Also certified to PAS 24 as well as approved by Secured by Design, it's ideal for applications such as plant rooms and boiler rooms where continuous airflow is required alongside protection of equipment or machinery.



## DOOR HARDWARE FEDERATION

dhf is a not-for-profit trade association for companies associated with locks & building hardware; doorsets; industrial doors & shutters; domestic garage doors and automated gates.



With over 500 members it's the 'go to' place for technical advice and training, raising the standards of the industry and providing a single source for technical expertise, information, knowledge, advice, and practical help.

It is a criteria of membership that at least one person who is in an area of responsibility and can change processes within the organisation attends the relevant dhf two day training course, and covers the requirements of a Complimentary Conformity Advice (CCA), ensuring that membership is on the basis of demonstrable high quality and legislative compliance.



## OUR PRODUCTS

Our broad product range ensures a stylish, high performance solution suitable for a variety of applications across the industrial and commercial sectors.

### OUTA-DOR

Our industry leading **OUTA-DOR** external door solutions include general purpose doorsets, emergency escapes, fire rated options and low U-value products.

Available with vision panels, louvres, over panels and side panels, along with the hardware of your choice.

Fire rated on request, for intervals of 60 minutes, 120 minutes or 240 minutes.

Manufactured from Magnelis® steel for unrivalled corrosion resistance.

**OUTA-DOR THERM** is available with a U value of just 1.3W/(m²K), or 1.5W/(m²K) if combining with 60 minutes fire resistance.

**OUTA-DOR** can be manufactured as a sports hall door in line with Sports England guidance, without impacting thermal resistance.

Up to 10 years warranty.



### INNA-DOR

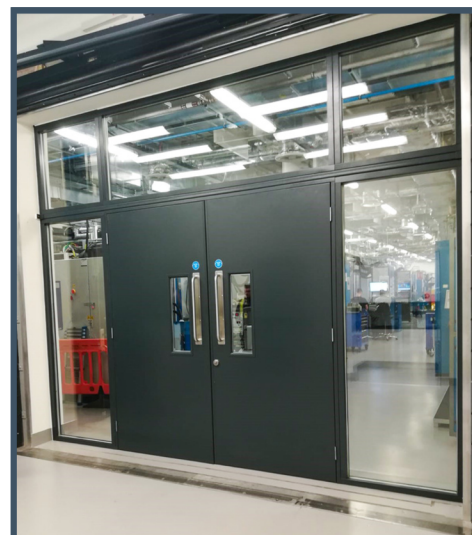
Offering an aesthetic design, durable construction and up to 4 hours fire protection, **INNA-DOR** is ideal for internal applications and compatible with a wide variety of wall constructions.

Available with vision panels, louvres, over panels and side panels, along with the hardware of your choice (dependent on fire rating requirements).

Designed to protect people and property from the spread of flames & smoke, with all doors tested to BS EN 1634-3 for smoke leakage and up to 240 minutes fire rating available on request.

Manufactured from Magnelis® steel for unrivalled corrosion resistance.

Up to 10 years warranty.



## SECUR-DOR 2.1

Re-designed and enhanced, our new and improved **SECUR-DOR 2.1** offers more choice and versatility than ever before, but without compromising on performance.

Tested to PAS 24 (2022), STS 201, BS EN 6375-1, 2 & 3, and Secured by Design approved.

Available fire rated for up to 60 minutes on request.

New and exclusive collection of ARNONE panic hardware has been developed in collaboration with HOPPE to provide cost-effective solutions without compromising on quality.

Manufactured from Magnelis® steel for unrivalled corrosion resistance.

Up to 10 years warranty.



## TUFF-DOR 2.1

**TUFF-DOR 2.1** is an LPS1175 certified security door that's Secured by Design accredited, and available with up to 60 minutes fire rating on request.

Available as both single and double doorsets, with vision panels and louvres (if not fire rated).

Manual and electric locking and emergency escape hardware options, plus a range of door closers and limit stays available.

Offers unrivalled corrosion resistance thanks to its Magnelis® steel construction.

Up to 10 years warranty.



## TUFF-VENT

**TUFF-VENT** offers maximum free airflow whilst maintaining strength & security.

PAS 24 certified and Secured by Design approved.

Ideal for use when continuous airflow is required alongside protection of equipment or machinery.

Two years warranty.



## VENT-DOR

Manufactured from lightweight aluminium or strong steel.

Available with matching side & over panels.

Louvred screens & enclosures also available.

Single or double openings.

Allows a minimum airflow of 50% (dependent on configuration).

Ideal for use in refuse areas, circulating air in from the bottom and allowing foul odours and potentially dangerous fumes to escape.

Two years warranty.



## GLAS-DOR

Glazed doorsets, windows, screens, facades & partitions all available.

Fire resistant E & EI ratings.

Ballistic & intruder resistant options available.

Slimline profile offers minimal sightlines.

Creates a smooth transition between internal and external spaces, zoning areas without closing them off.

Ideal for use in commercial & residential spaces such as hotels, office blocks, apartments & retail environments.

Two years warranty.



## OUTA-GATES

Manufactured from Magnelis® steel for unrivalled corrosion resistance.

Flat panel or tongue & groove effect.

Made-to-measure; two standard heights and custom width.

Range of hardware options available.

Each gate is supplied with template drilled hinges with dog bolts for additional security.

Up to 10 years warranty.



# FRAME TYPES



PROTECTING  
PEOPLE & PROPERTY

All frames are manufactured from 1.5mm Magnelis® steel as standard, and most are supplied with adjustable fixing feet to allow the frame to be accurately installed even in openings which are out of square. We also supply a variable sub-frame to accommodate for a site tolerance of +/- 30mm which ensures a quick, hassle-free installation.

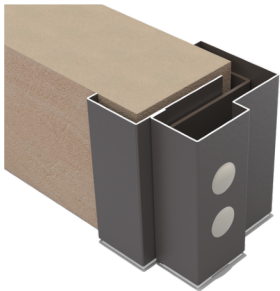
The following frames (excluding the E frame) are suitable for use with masonry, concrete, and flex stud walling (cold wall style), but are not compatible for use with insulated panels; please request an E frame for installations of this type.



## C FRAME

Our standard, most popular frame, the C frame is generally the most versatile and can be adjusted to be deeper or narrower as required.

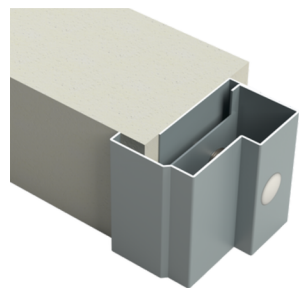
Durable, tough and easy fit, it's suitable for both inward and outward doorsets, and is the frame used to calculate our stated U values.



## A FRAME

This is a wrap-around frame typically used to wrap-around a solid masonry wall for a neat, sleek finish.

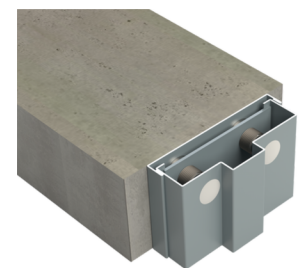
It's popular for use in fire rated doorsets, however your structure will need to meet the requirements of our certification.



## B FRAME

This is a single architrave door frame, designed to cover the opening on one side of the door. The other side of the door would show exposed masonry, which can be architraved over to match and would fit much like the c frame.

The B frame is available for both inward and outward opening doorsets. .



## D FRAME

Also known as a double architrave frame, the D frame is designed for architrave to be added to both sides to provide a neat, clean finish.



## E FRAME

A wrap around frame suitable for use with insulated panels.

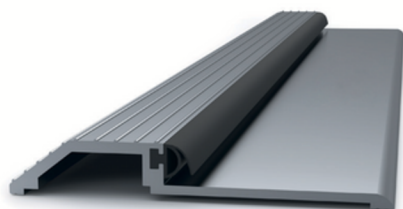


# THRESHOLDS



PROTECTING  
PEOPLE & PROPERTY

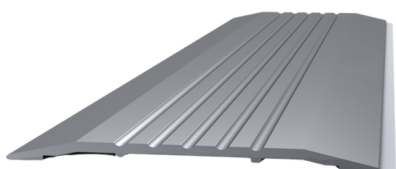
We provide a number of threshold options to ensure a flexible solution to suit your requirements.



## 15MM REBATED

This 15mm high aluminium threshold is our standard specification, and is DDA compliant.

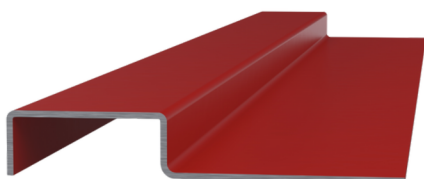
It's available for both inward and outward opening doorsets; inward opening thresholds also feature a rain deflector and can include a brush sweep.



## 6MM DRIVEABLE

Ideal for applications where trolleys or other wheeled items are regularly passing through the doorway.

Rain deflector and brush sweep are available on request.

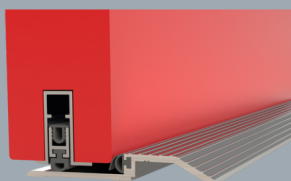


## 15MM STANDARD

This threshold is rarely specified due to the absence of an angled ramp.

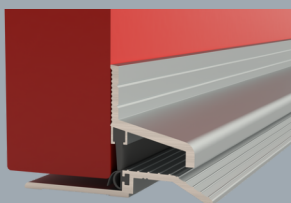
As such, applications are limited but may include heavy industrial applications that fall outside of the DDA definition of public buildings.

## ADDITIONAL ITEMS



### DROP SEAL

Available on request, with a choice of mortice or surface mounted options.



### RAIN DEFLECTOR

Does what it says on the tin!

# PANEL ARRANGEMENTS



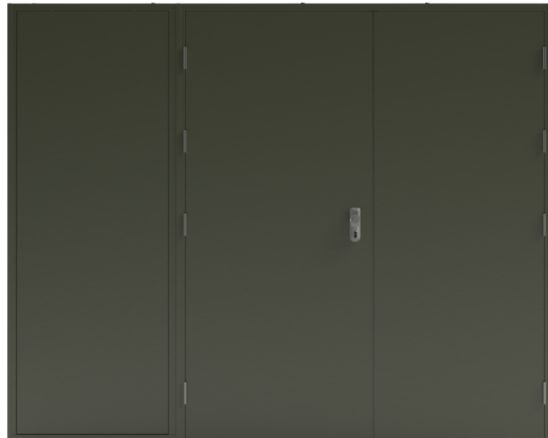
PROTECTING  
PEOPLE & PROPERTY

Panels can be solid, glazed or louvred; and fixed, hinged or removable (subject to certification requirements).

For further information, including minimum and maximum sizes for your specified doorset, please contact our estimating team.



Single door with side panel (L)



Double door with side panel (L)



Single door with two side panels (L & R)



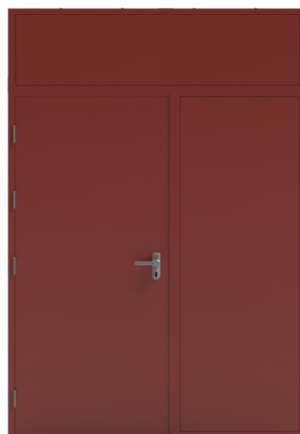
Double door with two side panels (L & R)



Single door with over panel



Double door with over panel



Single door with over panel & side panel (R)



Double door with over panel and side panel (R)

# VISION PANELS



PROTECTING  
PEOPLE & PROPERTY

## FLEXIBLE SOLUTIONS

We offer a wide variety of configurations and sizes of vision panels to suit your requirements, including Part M compliant solutions.

To make life easy, we have a wide range of standard vision panel solutions for you to choose from (see next page for more details). However, as all our doors are made-to-order we're also happy to manufacture doors with custom sized vision panels and glazing - please speak to our estimators to discuss your requirements.



## CONSTRUCTION

Welded construction from 1 mm cold rolled steel, screwed together from one side.

We use double glazed units as standard with our fire rated and non-fire rated doors.

Frames can be powder coated to match the leaf for a seamless look, or finished in a contrasting colour for maximum impact or should your frame require a Light Reflective Value (LRV) greater than 30 points from your structure.

Stainless steel frames can also be supplied on request



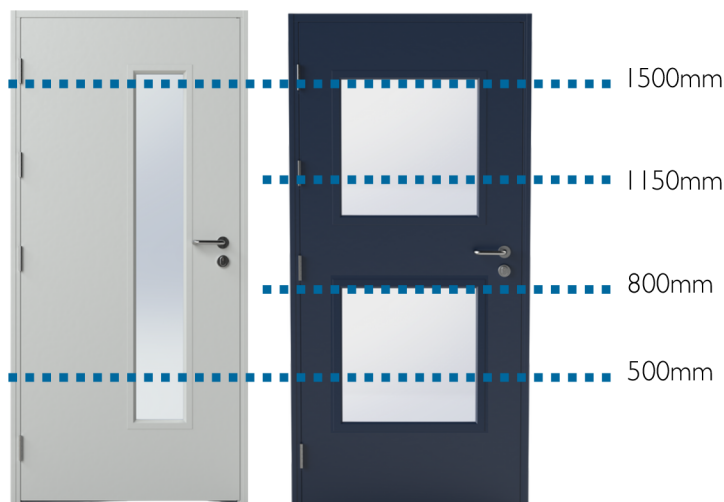
## PART M COMPLIANCE

Part M of the Building Regulations 2004 requires that doors wider than 450mm have minimum zone(s) of visibility in certain situations.

The visible area must be:

- on the leading edge of the door;
- between 500mm and 1500mm from the floor, and;
- may be interrupted between 800mm and 1150mm to accommodate door features such as hardware.

Vision panels less than 50% of the total door area are exempt from Part L of the Building Regulations.



# VISION PANELS



PROTECTING  
PEOPLE & PROPERTY

## STANDARD VISION PANELS



254mm x 254mm



254mm x 559mm



254mm x 762mm



\* 254mm x 1219mm



\* 254mm x 762mm  
254mm x 559mm



\* 254mm x 1524mm



610mm x 610mm



610mm x 1219mm

\* Part M Compliant.

## MAXIMUM DIMENSIONS

Maximum clear vision size for a fire rated doorset is 559mm x 1473mm per leaf.

Maximum vision panel dimensions and glazing used may be affected by fire rating and hardware requirements; please ask our estimators for further information.







## VENTILATION SOLUTIONS

Louvered panels can be incorporated on request for applications where continuous airflow is required for ventilation, such as plant rooms, boiler rooms, and waste facilities.

Providing up to 50% ventilation without compromising on style or security, we can manufacture doorsets with just one panel (positioned either top or bottom), two panels, or full length.

We can also manufacture louvered side and over panels, with fixed, hinged and fully removable options.

## LOUVRE SIZES

Our louvre panels are available in two standard sizes:

- 457mm x 457mm
- 457mm x 1524mm

Frames are 1.2mm thick, with blades at 0.7mm.

Louvre blades are constructed to stop birds, and insect mesh is also available on request.

Please speak to our estimators about **VENT-DOR** if you require louvres to a custom size that differs from our standard panels above.



457mm x 457mm  
Bottom



457mm x 1524mm  
Full length plus louvered over panel



457mm x 457mm  
Twin



457mm x 457mm  
Top



457mm x 1524mm  
Full length



We're proud to work with the industry's leading hardware manufacturers to ensure we offer a broad range of high quality locks as standard.



For further information about our locking hardware, please consult our Locking Guide - available online via [www.robust-uk.com/info-hub/useful-downloads](http://www.robust-uk.com/info-hub/useful-downloads) or scan the QR code.

## DEADLOCK



Arrone Deadlock  
Alt 1



Arrone Deadlock  
Alt 2



Arrone Deadlock  
Alt 3

## SASHLOCK



Hooply 95  
Sashlock



Arrone  
Sashlock



Hooply 95 Deadlock  
Alt 1

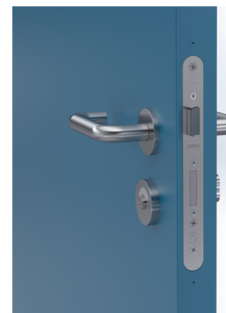


Hooply 95 Deadlock  
Alt 2



Hooply 95 Deadlock  
Alt 3

## TOILET LOCK



Arrone Toilet Lock

## NIGHTLATCH



Arrone Nightlatch  
Alt 1



Arrone Nightlatch  
Alt 2



Arrone Nightlatch  
With Snib

## LATCH



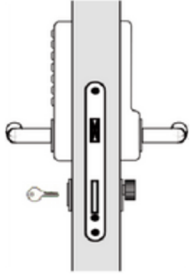
Arrone Latch

# HARDWARE

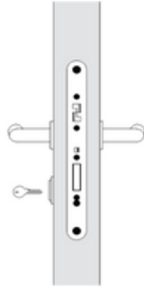
## LOOKING FOR MORE?

Please speak to our estimators if your preferred solution isn't listed here; this list is not exhaustive.

## ACCESS CONTROL



Mechanical Keypad



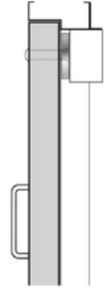
EL560



Electric Strike



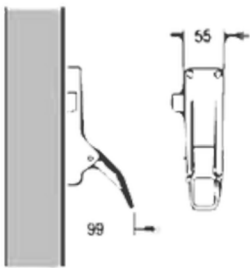
Electro-Magnet Lock  
Concealed Mounting



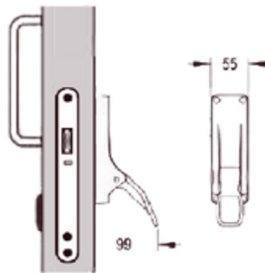
Electro-Magnet Lock  
Surface Mounted

## PANIC ESCAPE

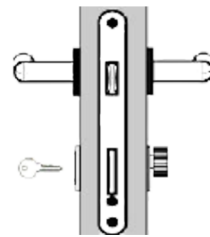
Emergency Application - EN179



Rim Panic Pad



Mortice Panic Pad

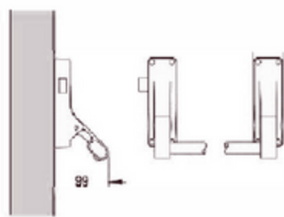


Escape Sashlock

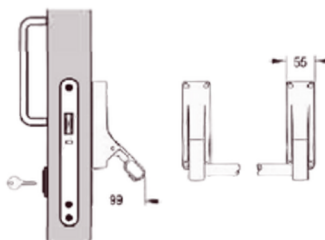


Escape Nightlatch

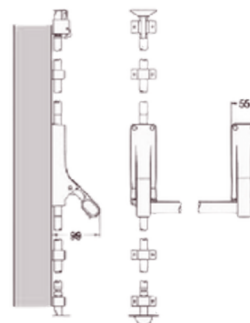
Panic Application - EN1125



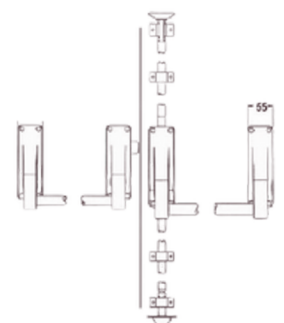
Rim Panic Latch



Mortice Panic Nightlatch



Two Point Panic Bolt



Double Door Escape

Escape door furniture can be fitted with a number of options for access from outside, such as panic latch or pad with a mechanical keypad - please ask our estimators for further information.



For further information about our panic hardware, please consult the Panic Hardware Guide - available online via [www.robust-uk.com/info-hub/useful-downloads](http://www.robust-uk.com/info-hub/useful-downloads) or scan the QR code.



## POWDER COATING

All Robust doors are supplied with a polyester powder coating (PPC) as standard.

We offer a broad choice of over 50 colours in our standard range, and are happy to finish in any non-standard colour of your choice too!

Choose your level of sheen from:

Matt 30% (also known as eggshell)

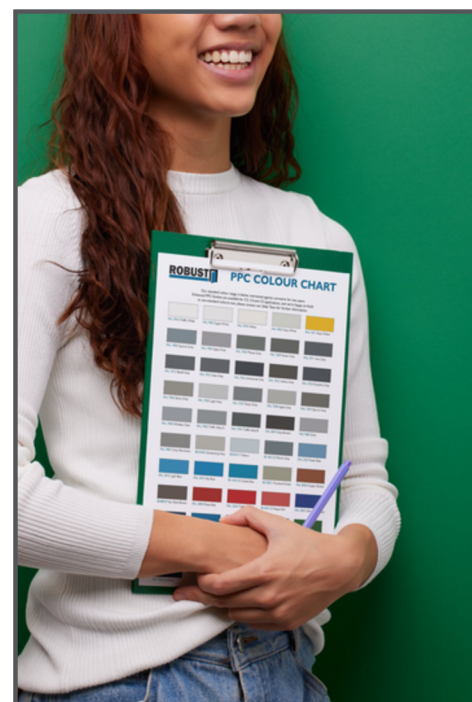
Semi-gloss 65%

Gloss 80%

We can manufacture “two-tone” doors with each side of the leaf a different colour, and enhanced PPC finishes are available for C4 and C5 applications for additional protection.



Scan to download  
our PPC Standard  
Colour Chart



## WOODGRAIN LAMINATE

Woodgrain laminates provide a high performance decorative finish that combines the warm, natural look and feel of wood with the durability and security of steel.

Realistic yet hardwearing, laminates require less upkeep than traditional wooden doors yet provide the same softer aesthetic. UV, scratch and moisture resistant, a laminate will not warp, rot or fade.

## STAINLESS STEEL

Our stainless steel doorsets bring together strength and style, ensuring a sleek, modern aesthetic that's also durable, hygienic and low maintenance.

Incredibly corrosion resistant, the smooth, non-porous surface prevents bacterial growth and is easy to clean and maintain. for long lasting performance. Stainless steel doors are therefore ideal for demanding environments such as commercial kitchens, hospitals, laboratories, pharmaceutical applications, and coastal or other highly corrosive environments.





# PPC COLOUR CHART



PROTECTING  
PEOPLE & PROPERTY

RAL 9016 Traffic White	RAL 9003 Signal White	RAL 9010 White	RAL 9002 Grey White	RAL 1021 Colza Yellow
RAL 7000 Squirrel Grey	RAL 7004 Signal Grey	RAL 7005 Mouse Grey	RAL 7009 Green Grey	RAL 7011 Iron Grey
RAL 7012 Basalt Grey	RAL 7015 Slate Grey	RAL 7016 Anthracite Grey	RAL 7022 Umbra Grey	RAL 7024 Graphite Grey
RAL 7030 Stone Grey	RAL 7035 Light Grey	RAL 7037 Dusty Grey	RAL 7038 Agate Grey	RAL 7039 Quartz Grey
RAL 7040 Window Grey	RAL 7042 Traffic Grey A	RAL 7043 Traffic Grey B	RAL 8019 Grey Brown	RAL 9006 Silver
RAL 9007 Grey Aluminium	BS10A05 Goosewing Grey	BS18 B 17 Heron	BS 18 B 25 Merlin Grey	RAL 5024 Pastel Blue
RAL 5012 Light Blue	RAL 5015 Sky Blue	BS 18 E 53 Cobalt Blue	BS12B21 Moorland Green	RAL 8004 Copper Brown
BS08B29 Van Dyke Brown	RAL 3000 Flame Red	RAL 3020 Traffic Red	BS 04 E 53 Poppy Red	RAL 5002 Ultramarine Blue
RAL 5003 Sapphire Blue	RAL 5005 Signal Blue	RAL 5010 Gentian Blue	RAL 5011 Steel Blue	RAL 6002 Leaf Green
RAL 6003 Olive Green	RAL 6005 Moss Green	BS12B29 Juniper Green	RAL 7021 Black Grey	RAL 9004 Signal Black
	<p>We offer over 50 options within our standard colour range, and are happy to finish in non-standard colours too. Please contact our estimators for further information.</p>			
RAL 9005 Jet Black				

# AFTER CARE



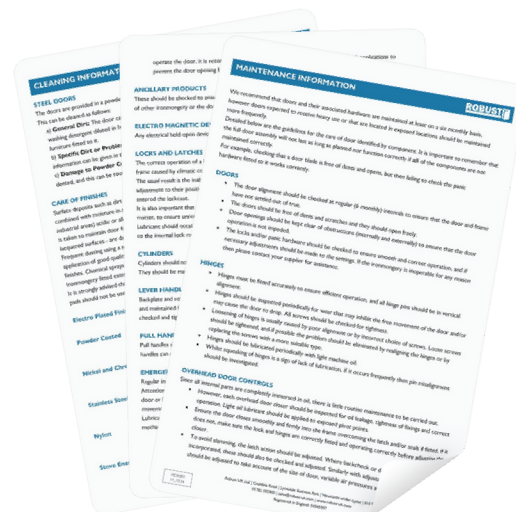
PROTECTING  
PEOPLE & PROPERTY

## CARE & MAINTENANCE

We recommend that doors and their associated hardware are maintained on a minimum six monthly basis. However, doors expected to receive heavy use or that are located in exposed locations should be maintained more frequently.

Failure to comply with regular maintenance and repairs will invalidate your warranty. For further information - including a Care & Maintenance Guide and Maintenance & Repair Log Sheet - please scan the QR code or visit

[www.robust-uk.com/info-hub/useful-downloads](http://www.robust-uk.com/info-hub/useful-downloads)

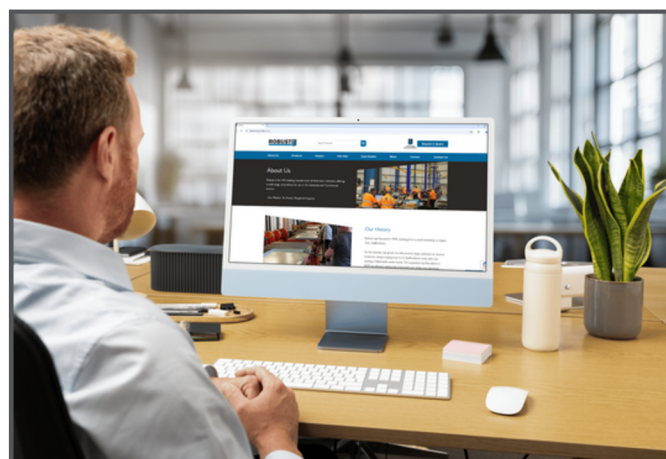


## THE ROBUST INFO HUB

Have you visited our website?

We regularly add new resources and information, from data sheets and brochures to handy downloadable documents and guides.

Our Info Hub includes a PPC colour chart, door handing chart, locking guide, and site survey sheet - all designed to make your life a little easier.



Simply visit [www.robust-uk.com/info-hub/](http://www.robust-uk.com/info-hub/) or scan the QR code to explore it for yourself!

# HANDING CHART

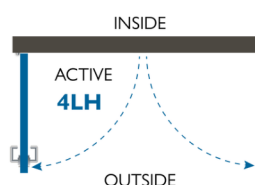
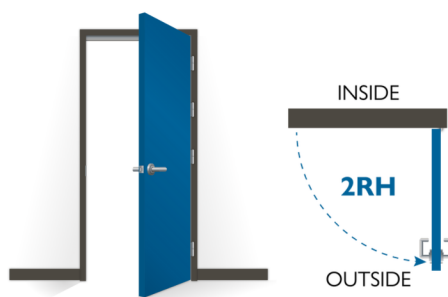
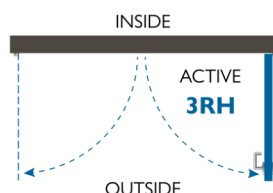
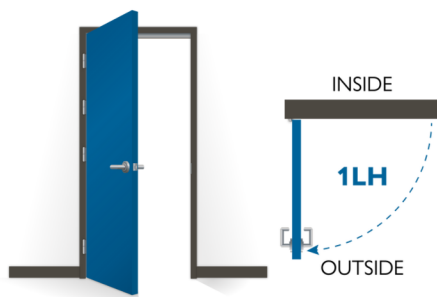


PROTECTING  
PEOPLE & PROPERTY

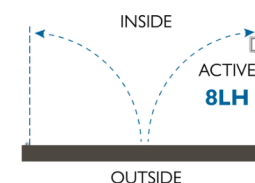
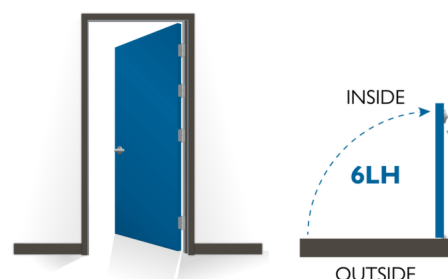
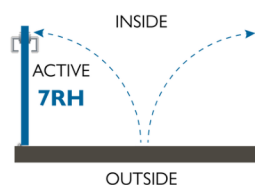
## SINGLE DOORS

## DOUBLE DOORS

OUTWARD OPENING



INWARD OPENING



# UK & IRELAND SALES AREAS

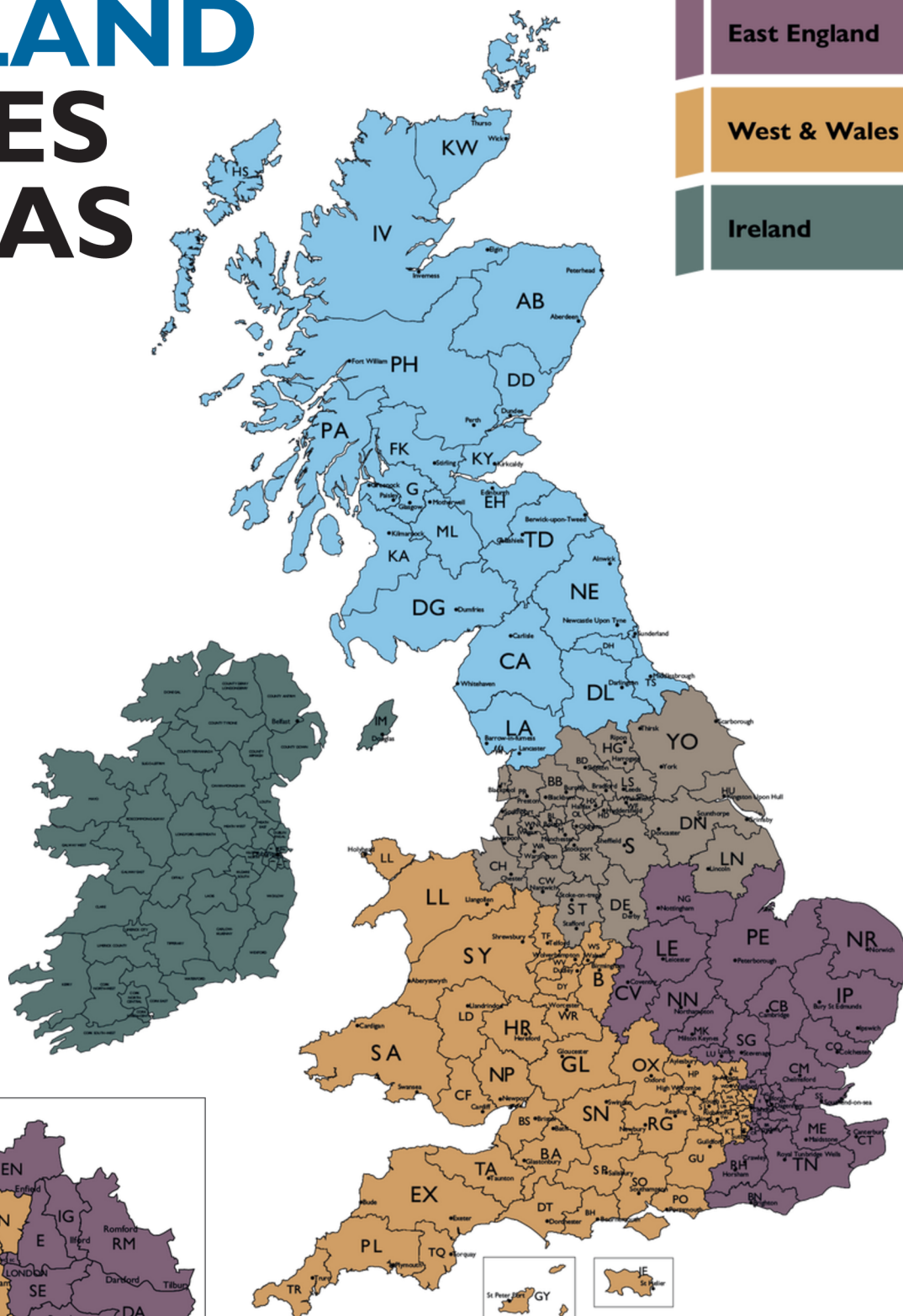
Scotland & North

North England

East England

West & Wales

Ireland



London





# NOTES



PROTECTING  
PEOPLE & PROPERTY

.....

.....

.....

.....

.....

.....

.....

.....

.....

.....

.....

.....

.....

.....

.....

.....

.....

.....

.....

.....

.....

# THE **TRADE ONLY** COMPANY YOU CAN TRUST



## 10 YEAR WARRANTY

Up to 10 years anti-corrosion warranty on doors manufactured using Magnelis® steel.\*

\* Warranty duration differs for alternative materials.



## MADE-TO-MEASURE

All steel doors are made to order at our UK factory, available in a broad range of heights and widths, and delivered fully assembled.



## THIRD PARTY CERTIFICATION

All our products are third-party tested to give you peace-of-mind that they perform how we say they do.



## HARDWARE FITTED

Hardware is already fitted to the door in the factory, saving time and effort on-site.



## HIGH QUALITY LOCKS AS STANDARD

Locks are always fitted into a purpose made internal reinforcement box, not hung from the fore end plate loose in the leaf.



## FULL FITTING KITS SUPPLIED WITH EVERY DOOR

Kit includes a 12mm allen key to make frame adjustment easy, and a selection of drill bits for fitting into concrete or steel.



## QUICK, HASSLE-FREE FITTING

Fitting a Robust door is quick and easy thanks to adjustable fixing feet and variable sub-frames, always supplied as standard.



## SOME LITTLE EXTRAS

We supply a pot of touch-up paint with every door, along with a tube of clear mastic for use during installation to prevent water ingress under the threshold.



## DELIVERY TO SITES ACROSS THE UK

We can deliver your doors to any site across the UK.



## INSTALLATION TRAINING & SUPPORT

We can provide installation training to your fitters and assist on-site if required.

**ROBUST**

PROTECTING  
PEOPLE & PROPERTY